

ECHELON PLUS

Ornamental Aluminum Fence

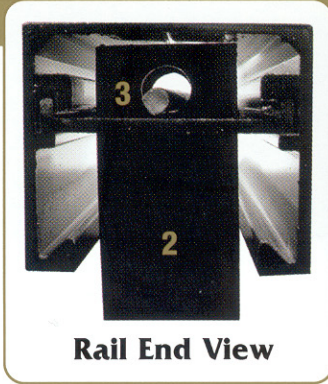
Raising Fence Expectations



AMERISTAR®

Increased size for Today's Environment

Ameristar's Echelon Plus



- 1. ForeRunner™ Rail – Can Take 3 Times More Impact**
- 2. 3/4" Picket – Larger Size Won't Bend Easily**
- 3. Secure Picket Connection – Tamperproof ForeRunner™ Retainer Invisibly Locks Picket In Place**
- 4. Solid Panel Connection – Heavy Aluminum Bracket Wraps Around Post**
- 5. 2-1/2" Reinforced Post – Twice as Strong**

Panel Repair or Replacement Is Easy With the Echelon Plus™ Design

The Echelon Plus™ Can Be Installed on a Bias To Follow Grade Changes in the Property Line



Strength & Style for Today's Active Living Areas



Raising Fence Expectations

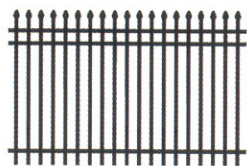
At last, quality has been raised to exceed industry standards; to reach the level of quality demanded by your active lifestyle.

Fencing in and around outdoor living areas, whether associated with individual homes or entire communities, are constantly in harm's way. The unique shape and extra size of Echelon Plus™ components will reduce the risk of failures such as:

Understanding this increasingly perilous environment, Ameristar designed Echelon Plus™ with components that were significantly increased in size and shape. Ameristar delivers the fence for your lifestyle.



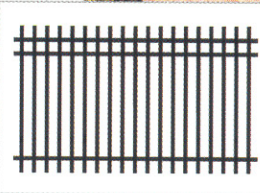
Redefini



3 or 4 Rail Option

Classic

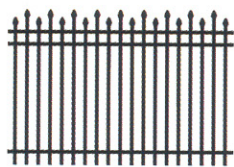
Traditional Spear-pointed picket extends through the top rail to form the popular Classic design. The picket spear is formed with a 3/8" diameter rounded tip rather than a sharp point.



3 or 4 Rail Option

Genesis

The extended flat-topped pickets of the Genesis fence form a popular and attractive style in itself. This flat-topped picket comes with a plug-like cap or can be modified by using Quad Flares or Triad picket tops for a more custom look.



3 or 4 Rail Option

Warrior

The look of excellence in a traditional ornamental fence is further enhanced by the alternating picket heights that mark the Warrior design. This style complements landscaping, giving an elegant look to any property line.

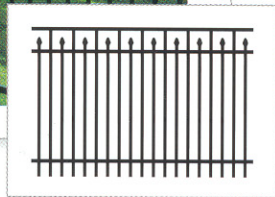
ng Style



3 or 4 Rail Option

Majestic

The elegant look of the Majestic design lends to its appeal in a wide variety of applications ranging from neighborhood residential fencing, to pool enclosures, apartment and condominium access control.



3 or 4 Rail Option

Conqueror

The unique Conqueror configuration offers 'the best of both worlds' by combining the striking look of spear topped pickets with the safety of a flush top rail.



2 Rail Design

Monarch

The Monarch 2-rail design offers contemporary simplicity with no protruding pickets offering safe and elegance to your pool area. Check your local pool code for compliance prior to ordering.



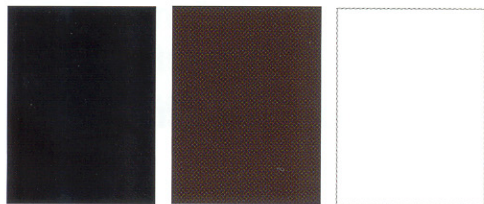
Welded Swing Gates

Swing gates are available to match all Echelon Plus panel designs and they employ doubly thick components welded at all intersections. Tests show that the Echelon Plus gates are capable of holding three times the weight.

Arched Swing Gates

Single and double swing gates can be manufactured with arched top rails spaced to match the appropriate Echelon Plus panel designs. Arched swing gates have the same all welded construction as standard Echelon Plus gates.

Color Swatch



Black

Bronze

White

Request color chip samples for actual color.



Adornments

Decorative accessories include picket tops, post caps, and scrolls. Also available is the patented cast aluminum ring that is firmly attached between rails without screws or rivets.



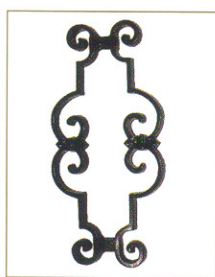
Quad Flares



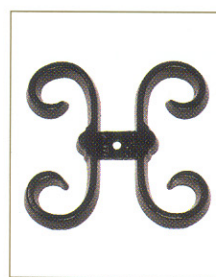
Triads



Ball Cap



**Florentine
Scroll**

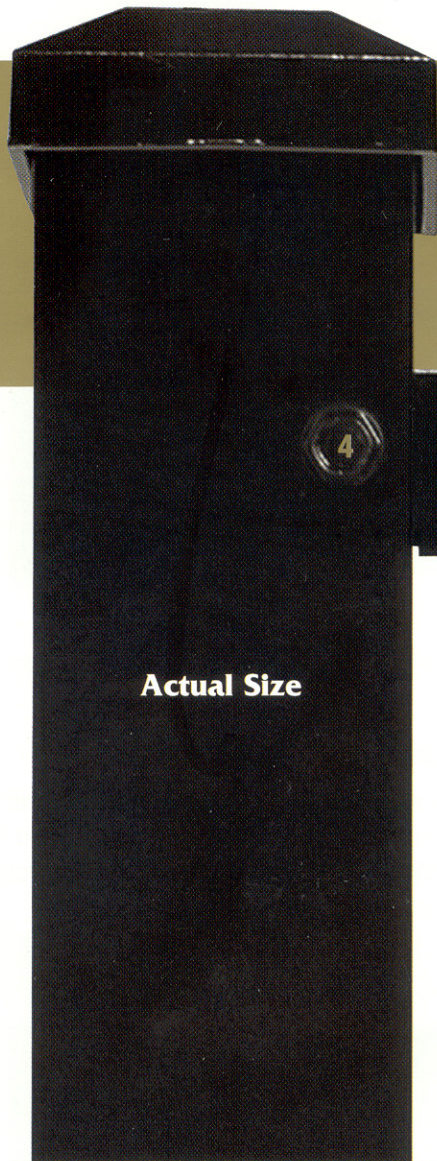


**Butterfly
Scroll**



Rings

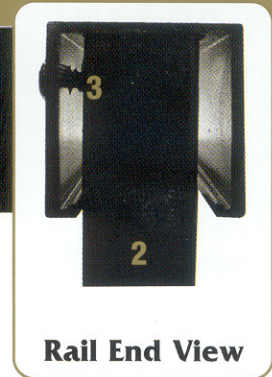
Industry Standard



Actual Size



View looking inside post



Rail End View

1. 1" Rail – Undersized for Impact from Side
2. 5/8" Picket – Can Bend or Bow Apart
3. Picket Held by Screw – One-sided Connection Is Weak, Unsightly, & Easily Comes Loose
4. Panel Insert – Connected Only by Tip of One Screw, Rail Can Pull Away from Post
5. 2" Post – Weakened by Punched Holes for Rails

Replacement of Traditional Aluminum Panels Requires Removal & Reinstallation of Post

Traditional Aluminum Panels Must be Installed On Level Ground or be Randomly 'Stair-Stepped'



“Limited Lifetime Warranty”

Redefining Style



AMERISTAR®

Fence Products

1555 N. Mingo Rd.
Tulsa, OK 74116
1-888-333-3422
www.ameristarfence.com